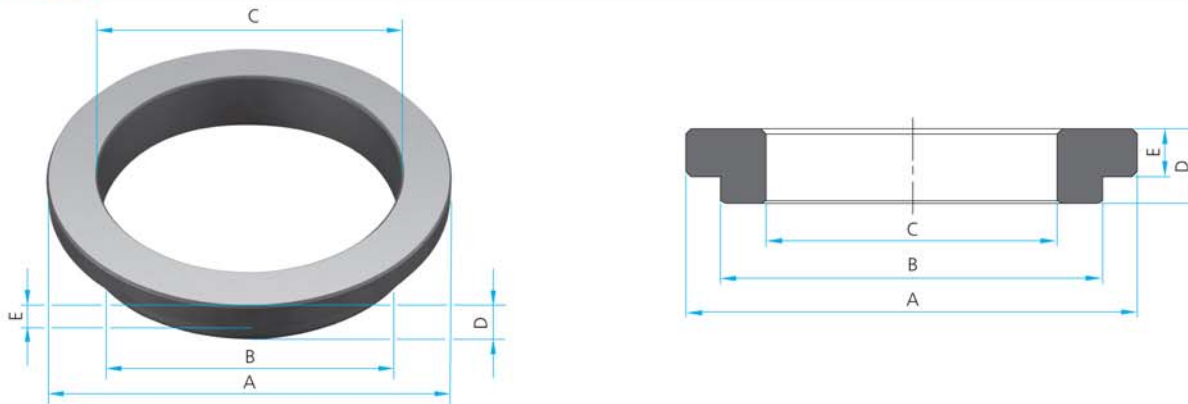


SEAT G06



Item	Code	Ø Shaft (mm)	Ø A (mm) ± 0,2	Ø B (mm) ± 0,05	Ø C (mm) ± 0,2	D (mm) ± 0,2	E (mm) ± 0,1	F (mm)	G (mm)
1	00080SG06	8	-	-	-	-	-	-	-
2	00100SG06	10	20,7	16,45	11,1	8,0	4,0	-	-
3	00120SG06	12	-	-	-	-	-	-	-
4	00140SG06	14	24,7	20,45	15,0	8,0	4,0	-	-
5	00150SG06	15	27,0	22,46	17,1	8,0	4,0	-	-
6	00160SG06	16	-	-	-	-	-	-	-
7	00180SG06	18	32,6	26,70	19,1	9,1	4,0	-	-
8	00190SG06	19	34,6	28,80	20,0	9,1	4,0	-	-
9	00200SG06	20	34,6	28,80	21,0	9,1	4,0	-	-
10	00220SG06	22	36,6	30,74	23,0	9,1	4,0	-	-
11	00240SG06	24	38,6	32,74	25,0	9,1	4,0	-	-
12	00250SG06	25	39,6	33,78	26,0	9,1	4,0	-	-
13	00280SG06	28	-	-	-	-	-	-	-
14	00300SG06	30	44,6	38,77	31,0	9,1	4,0	-	-
15	00320SG06	32	47,6	41,78	33,0	9,1	3,7	-	-
16	00330SG06	33	-	-	-	-	-	-	-
17	00350SG06	35	49,6	43,76	36,0	9,1	4,0	-	-
18	00380SG06	38	55,6	48,64	39,0	11,0	5,0	-	-
19	00400SG06	40	57,5	50,62	41,0	11,0	4,7	-	-
20	00420SG06	42	-	-	-	-	-	-	-
21	00430SG06	43	60,5	53,64	44,0	11,0	5,0	-	-
22	00450SG06	45	62,5	55,69	46,0	11,0	5,0	-	-
23	00480SG06	48	65,5	58,64	49,0	11,0	4,7	-	-
24	00500SG06	50	69,5	61,67	51,0	11,5	4,7	-	-
25	00530SG06	53	-	-	-	-	-	-	-
26	00550SG06	55	74,5	66,63	56,0	13,1	6,7	-	-
27	00580SG06	58	77,5	69,66	59,0	13,1	6,3	-	-
28	00600SG06	60	79,5	71,92	61,0	13,1	6,7	-	-
29	00650SG06	65	84,6	76,70	66,0	13,1	6,3	-	-
30	00680SG06	68	-	-	-	-	-	-	-
31	00700SG06	70	91,4	82,76	71,1	13,1	6,0	-	-
32	00750SG06	75	96,4	87,47	76,0	13,1	6,0	-	-
33	00800SG06	80	104,8	94,72	81,3	13,8	6,5	-	-
34	00850SG06	85	-	-	-	-	-	-	-
35	00900SG06	90	-	-	-	-	-	-	-
36	00950SG06	95	-	-	-	-	-	-	-
37	01000SG06	100	-	-	-	-	-	-	-