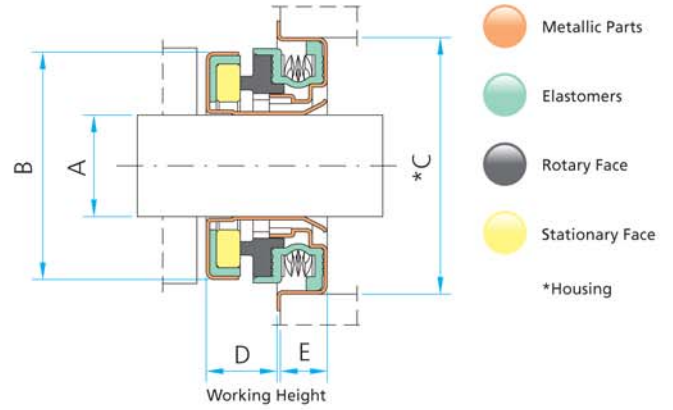
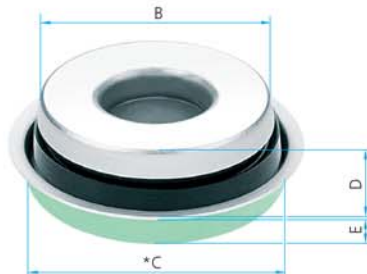


TYPE 74 COMPACT

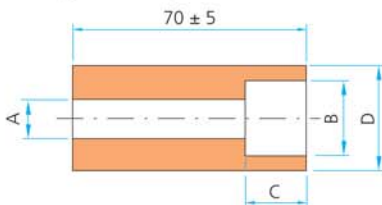
12 m/s → 2,5 bars



Item	SEAL CODES								Ø Shaft	Ø A (mm) ± 0,05	Ø B (mm) ± 0,2	Ø C (mm) ± 0,05	D (mm) + 0,2	E (mm)	Number of mounting device	
	Type and Shaft	Rotary Set	Elastomer			Rotary Face	Metal Parts	Stationary Seat								Stationary Set
			B NBR	E E.P.D.M.	V Viton®	P Graphite Injected	S Silicon Carbide	L Brass	4 Stainless Steel 304	R Ceramic	S Silicon Carbide					
METRIC																
1	7462	S							S	12	12,00	26,90	29,95 / 29,99	7,10	5,50	74-1
2	7465	S							S	15	15,00	30,50	36,45 / 36,49	9,10	6,30	74-2
3	7410	S							S	16	16,00	30,50	36,45 / 36,49	9,10	6,30	74-3
INCHES																
4	7410	S							S	5/8"	15,87	30,50	36,45 / 36,49	9,10	6,30	74-3

DEVICE FOR ASSEMBLY ON PUMP SEAL WATER

Building in steel VND, hardness 55-58 Rc



Device	øA	øB	C	øD
N°	+ 0,2	± 0,1	+ 0,02	± 0,3
74-1	12,2	30,0	7,10	35,0
74-2	15,2	36,0	9,10	42,0
74-3	16,2	36,0	9,10	42,0